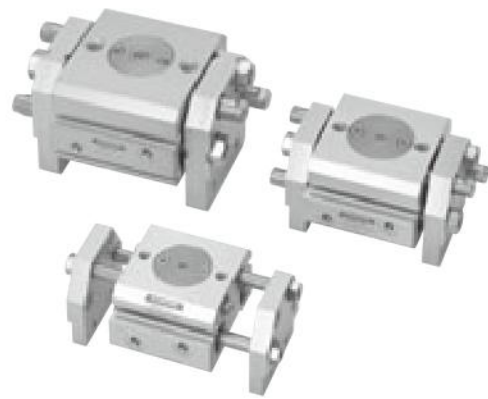


# WHDP SERIES RACK OPERATION PARALLEL TYPE

Wide Type Air Hands, Double Acting Type



## Specifications

### ● Double acting rack operation parallel type

Basic model		WHDP-12	WHDP-16	WHDP-20	WHDP-25
Item					
Cylinder bore size	mm [in.]	12 [0.472]	16 [0.630]	20 [0.787]	25 [0.984]
Operation type		Double acting type			
Media		Air			
Operating pressure range	MPa [psi.]	0.2~0.7 [29~102]			
Proof pressure	MPa [psi.]	1.05 [152]			
Operating temperature range	°C [°F]	0~60 [32~140]			
Maximum operating frequency	cycle/min	120			
Lubrication		Not required			
Effective gripping force (F) <sup>Note</sup>	N [lbf.]	24 [5.4]	48 [10.8]	82 [18.4]	132 [29.7]
Lever open/closed stroke	mm [in.]	24 [0.945]	32 [1.260]	40 [1.575]	50 [1.969]
Repeatability	mm [in.]	±0.08 [±0.0031]			
Port size		M5×0.8			
Mass	g [oz.]	230 [8.1]	400 [14.1]	760 [26.8]	1100 [38.8]

Note: Values are obtained when grip point length is 50mm [1.97in.] under operating pressure 0.5 MPa [73psi].  
For details of the effective gripping force, see the graphs on p.1391.

## Order Codes

