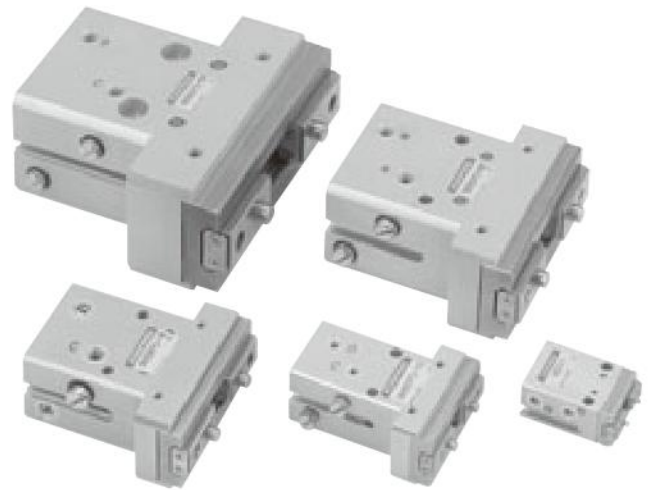
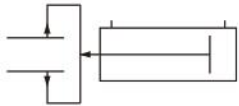


# NHB SERIES PARALLEL TYPE

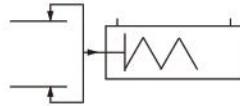
Linear Guide Specification  
Double Acting Type, Single Acting Normally Open Type



## Symbols



Double Acting Type



Single Acting  
Normally Open Type

## Specifications

### ● Double acting parallel type

Basic model		NHBDPG-8	NHBDPG-10	NHBDPG-16	NHBDPG-20	NHBDPG-32
Item						
Cylinder bore size	mm [in.]	8 [0.315]	10 [0.394]	16 [0.630]	20 [0.787]	32 [1.260]
Operation type		Double acting type				
Media		Air				
Operating pressure range	MPa [psi.]	0.22~0.7 [32~102]	0.2~0.7 [29~102]	0.12~0.7 [17~102]	0.1~0.7 [15~102]	
Proof pressure	MPa [psi.]	1.05 [152]				
Operating temperature range	°C [°F]	0~60 [32~140]				
Maximum operating frequency	cycle/min	120				
Lubrication		Not required				
Effective gripping force (F) <sup>Note 1</sup>	Closed side	5.8 [1.30]	9.4 [2.11]	26.4 [5.93]	45.0 [10.12]	157.8 [35.47]
	Open side	9.9 [2.23]	14.7 [3.30]	39.2 [8.81]	59.8 [13.44]	176.4 [39.65]
Lever open/closed stroke	mm [in.]	4 [0.157]	6.5 [0.256]	10 [0.394]	14 [0.551]	22 [0.866]
Repeatability	mm [in.]	±0.01 [±0.0004]				
Port size		M3×0.5			M5×0.8	
Mass <sup>Note 2</sup>	g [oz.]	24 [0.85] (29 [1.02])	80 [2.82] (91 [3.21])	159 [5.61] (178 [6.28])	329 [11.60] (355 [12.52])	664 [23.42]

Notes: 1. Values are obtained when grip point length is 30mm [1.18in.] under operating pressure 0.5 MPa [73psi.]. For details of the effective gripping force, see the graphs on p.1385.

2. ( ) mean the mass with the mounting bracket: -M.

### ● Single acting normally open parallel type

Basic model		NHBRPG-8	NHBRPG-10	NHBRPG-16	NHBRPG-20
Item					
Cylinder bore size	mm [in.]	8 [0.315]	10 [0.394]	16 [0.630]	20 [0.787]
Operation type		Single acting normally open type			
Media		Air			
Operating pressure range	MPa [psi.]	0.4~0.7 [58~102]	0.35~0.7 [51~102]	0.25~0.7 [36~102]	
Proof pressure	MPa [psi.]	1.05 [152]			
Operating temperature range	°C [°F]	0~60 [32~140]			
Maximum operating frequency	cycle/min	120	80		
Lubrication		Not required			
Effective gripping force (F) <sup>Note 1</sup>	Closed side	4.1 [0.92]	6.8 [1.53]	19.6 [4.41]	34.3 [7.71]
	Open side	2.7 [0.61]	2.4 [0.54]	5.4 [1.21]	7.3 [1.64]
Lever open/closed stroke	mm [in.]	4 [0.157]	6.5 [0.256]	10 [0.394]	14 [0.551]
Repeatability	mm [in.]	±0.01 [±0.0004]			
Port size		M3×0.5			M5×0.8
Mass <sup>Note 2</sup>	g [oz.]	24 [0.85] (29 [1.02])	81 [2.86] (92 [3.25])	160 [5.64] (179 [6.31])	330 [11.64] (356 [12.56])

Notes: 1. Values are obtained when grip point length is 30mm [1.18in.] under operating pressure 0.5 MPa [73psi.]. For details of the effective gripping force, see the graphs on p.1385.

2. ( ) mean the mass with the mounting bracket: -M.