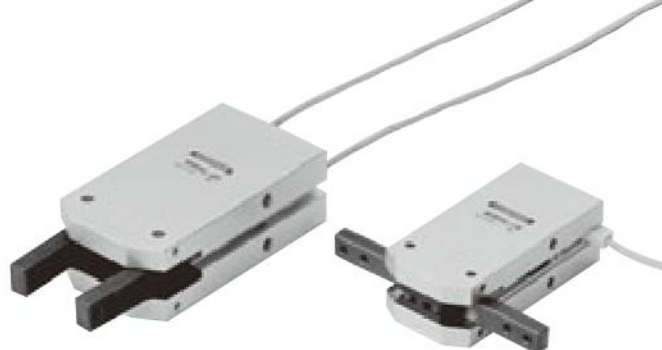
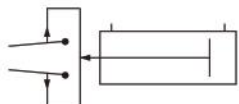


NHB SERIES SWING TYPE

180° Open Specification



Symbol



Double Acting Type

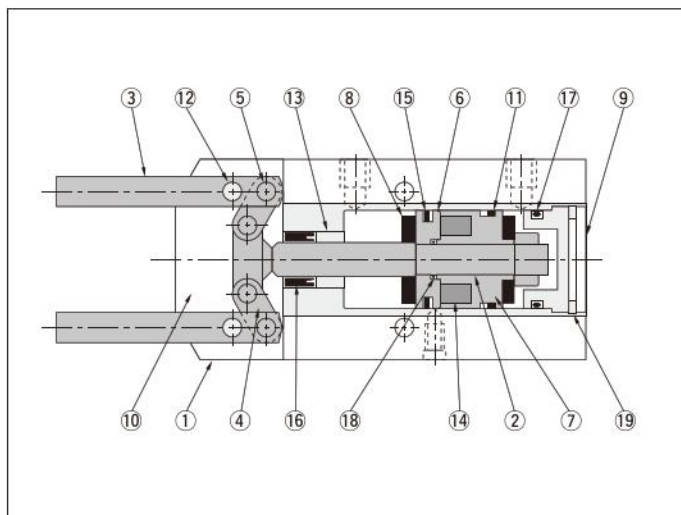
Specifications

● Double acting swing type

Basic model		NHBDSL-12	NHBDSL-16	NHBDSL-20	NHBDSL-25
Item					
Cylinder bore size	mm [in.]	12 [0.472]	16 [0.630]	20 [0.787]	25 [0.984]
Operation type		Double acting type			
Media		Air			
Operating pressure range	MPa [psi.]	0.2~0.7 [29~102]			
Proof pressure	MPa [psi.]	1.0 [145]			
Operating temperature range	°C [°F]	0~60 [32~140]			
Maximum operating frequency	cycle/min	100			
Lubrication	Cylinder portion	Not required			
	Lever portion	Required (Apply grease to the sliding portion)			
Theoretical gripping moment (M) ^{Note}	N · cm [in · lbf]	47P [0.0287P]	128P [0.0781P]	231P [0.1410P]	525P [0.3204P]
Maximum grip point length	mm [in.]	40 [1.57]	80 [3.15]	100 [3.94]	60 [2.36]
Effective gripping force (F) ^{Note}	N [lbf.]	$F = M/L \times 9.0$ [$F = M/L \times 0.9$]			
Lever open/closed angles		-10°~+180°	-6°~+180°		-10°~+180°
Port size		M3×0.5	M5×0.8		
Mass	g [oz.]	55 [1.94] (65 [2.29])	146 [5.15] (165 [5.82])	277 [9.77] (303 [10.69])	427 [15.06] (478 [16.86])

Note: F: Effective gripping force (value when levers are parallel), L: Grip point length mm [in.], M: Theoretical gripping moment, P: Operating pressure MPa [psi.]. Values of P and L should vary from SI unit to imperial units. For details of the effective gripping force, see the graphs on p. 1389.

Inner Construction



Major Parts and Materials

No.	Parts	Materials
①	Body	Aluminum alloy
②	Piston rod	Carbon steel
③	Lever	Carbon steel
④	Link	Carbon steel
⑤	Press fitting link pin	Carbon tool steel
⑥	Piston	Brass
⑦	Piston holder	Brass
⑧	Cushion rubber	Urethane
⑨	Head cover	Aluminum alloy
⑩	Slide plate	Phosphor bronze
⑪	Wear ring	Plastic
⑫	Fulcrum pin	Carbon tool steel
⑬	Oil impregnated bushing	Oil impregnated copper alloy
⑭	Magnet	Magnet material
⑮	Piston seal	Synthetic rubber (NBR)
⑯	Rod seal	Synthetic rubber (NBR)
⑰	Head seal	Synthetic rubber (NBR)
⑱	O-ring	Synthetic rubber (NBR)
⑲	C-shaped snap ring	Steel