

# SPEED CONTROLLERS TSCO SERIES

M3 × 0.5

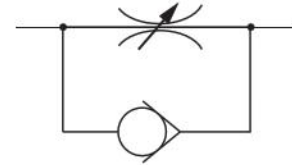


- Offer fine speed control for the M3 ported Pen Cylinders.
- Compact, lightweight, and easy to handle.

## Specifications

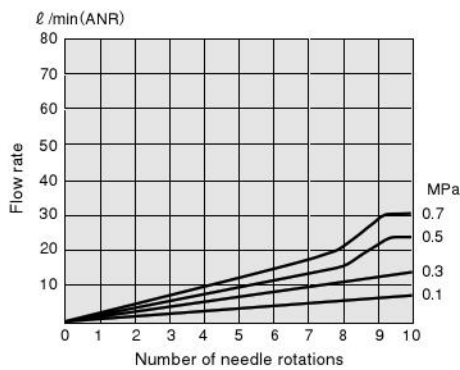
Item	Model	TSCO	TSCO-L	TSCO-UC	TSCO-UL
Piping type	Controlled flow P	Female thread		Universal male thread	
	Controlled flow A	Female thread			
Port size		M3 × 0.5			
Media		Air			
Operating pressure range	MPa [psi.]	0 ~ 0.7 [0 ~ 102]			
Proof pressure	MPa [psi.]	1.03 [149]			
Cracking pressure	MPa [psi.]	0.05 [7.3]			
Operating temperature range	°C [°F]	5 ~ 60 [41 ~ 140]			
Mass	g [oz.]	5 [0.18]	4 [0.14]	6 [0.21]	6 [0.21]

## Symbol

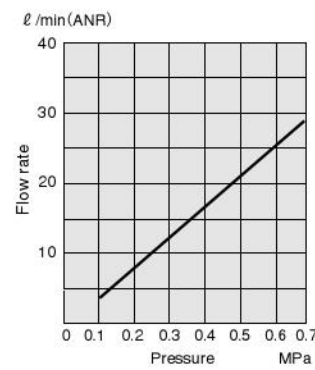


## Flow Rate Characteristics

### ● Controlled flow

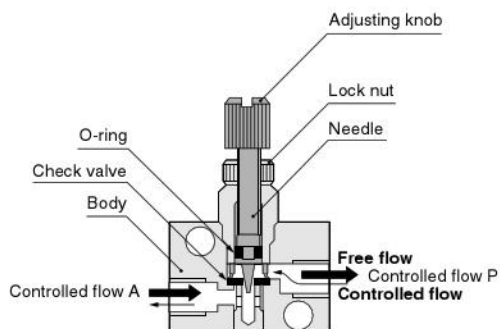


### ● Free flow



1MPa = 145psi. 1 l/min = 0.0353ft<sup>3</sup>/min.

## Inner Construction and Major Parts



## Major Parts and Materials

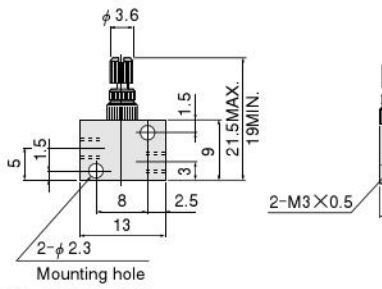
Parts	Materials
Body	Brass (nickel plated)
Needle	Stainless steel
Lock nut	Brass (nickel plated)
Check valve	Synthetic rubber (NBR)
O-ring	
Adjusting knob	Brass (nickel plated)

## Order Codes

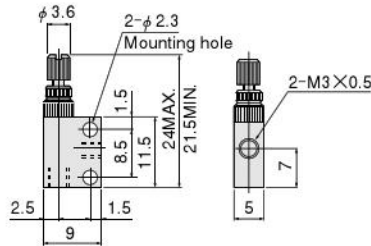
<b>Model</b>	<b>Non-ion specification</b>	
TSCO	Blank	Standard specification
TSCO-L	NCU	Non-ion specification
TSCO-UC		
TSCO-UL		

## Dimensions (mm)

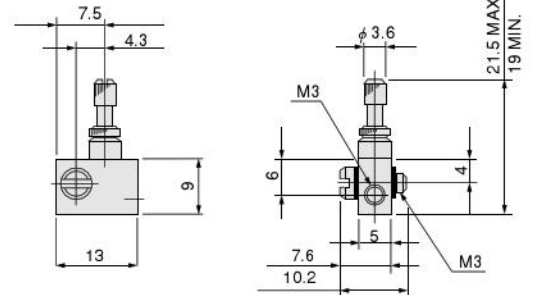
### ● TSCO



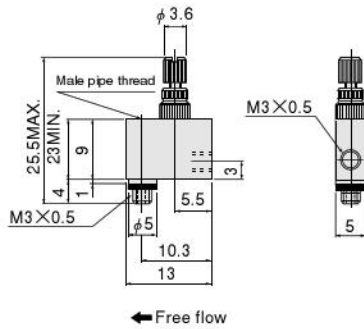
### ● TSCO-L



### ● TSCO-UC



### ● TSCO-UL



## Handling Instructions and Precautions

- Always use fingertips to rotate and tighten the lock nut and needle. Use of excessive tightening force with tools, etc., could cause damage to the units.
- When using a universal male thread type for piping, secure at the male pipe thread portion. The tightening torque should not exceed  $0.5 \text{ N} \cdot \text{m}$  [4.4 in · lbf].