

- Compact fitting series for all kinds of compact equipment.
- Wide selection of compact fittings.

Types and Specifications



Common specifications

Media	Air
Operating pressure range MPa [psi]	0 ~ 0.9 [0 ~ 131] ^{Note}
Proof pressure MPa [psi]	1.35 [196] ^{Note}

Note: However, check the specification values for the tubes you are using.

• The recommended tightening torque for thread sizes M3×0.5 and M5×0.8 is 0.6 N·m [5.311 in·lbf] and 1.6 N·m [14.162 in·lbf], respectively.

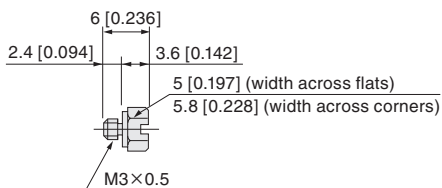
Fittings for threaded piping

Name and type		Plug			
					
Model		PF-M3	PF	PF-M6M	PF-M8M
Port size		M3×0.5 (male thread)	M5×0.8 (male thread)	M6×0.75 (male thread)	M8×0.75 (male thread)
Applicable tube	OD × ID mm [in]	—			
Effective area	mm ² [Cv]	—			
Operating temperature range	°C [°F]	0 ~ 60 [32 ~ 140]			
Material		Stainless steel	Brass (nickel plated)		
Mass	g [oz]	0.5 [0.018]	1.3 [0.046]	1.9 [0.067]	3.2 [0.113]
Remark	Attachments/accessories	With 1 gasket			
	Sales unit	1 pack (10 pcs.)			

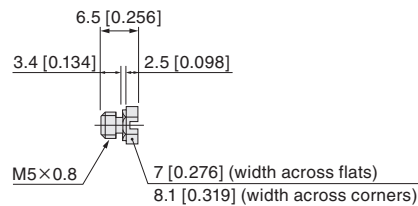
Dimensions mm [in]

Plug

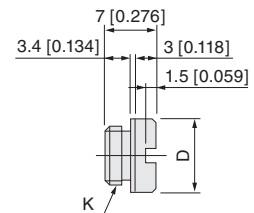
●PF-M3



●PF



●PF-M□M



Model	D	K
PF-M6M	8 [0.315]	M6×0.75
PF-M8M	10 [0.394]	M8×0.75