

# SHOCK ABSORBERS

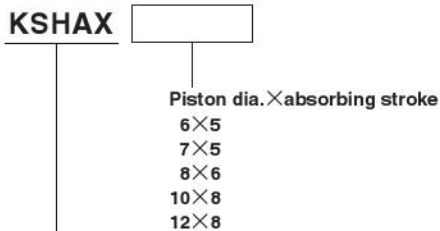
## Optional Shock Absorbers for Particular Products

### ● Shock Absorbers for AXIS Cylinders

#### Specifications

Item \ Model	KSHAX6×5	KSHAX7×5	KSHAX8×6	KSHAX10×8	KSHAX12×10
Applicable cylinder	XDA□16	XDA□20	XDA□25	XDA□32	XDA□40
Maximum absorption J [ft·lbf]	1.5 [1.11]	2.0 [1.48]	2.9 [2.14]	6.9 [5.09]	11.8 [8.70]
Absorbing stroke mm [in.]	5 [0.20]	5 [0.20]	6 [0.24]	8 [0.31]	10 [0.39]
Maximum impact speed mm/s [ft./sec.]	700 [2.3]				
Maximum operating frequency cycle/min	60				
Operating temperature range °C [°F]	0~60 [32~140]				
Mass kg [oz.]	0.018 [0.63]	0.033 [1.16]	0.045 [1.59]	0.084 [2.96]	0.107 [3.77]

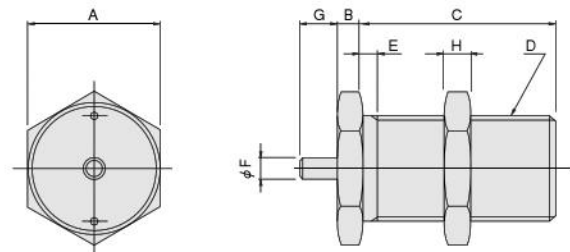
#### Order Codes



Shock absorber for AXIS cylinder

**Caution:** For AXIS Cylinders, see the Actuators General Catalog.

#### Dimensions (mm)



Code \ Model	A	B	C	D	E	F	G (Stroke)	H
<b>KSHAX6×5</b>	14	3	19	M12×1	1.5	3	5	3
<b>KSHAX7×5</b>	17	3	26	M14×1	2	3	5	4
<b>KSHAX8×6</b>	19	3	28	M16×1.5	2	3	6	4
<b>KSHAX10×8</b>	22	3	37	M20×1.5	2	5	8	4
<b>KSHAX12×10</b>	24	3	40	M22×1.5	2	5	10	4