

● Shock Absorbers for Rotary Actuators RAT Series

Specifications

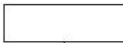
Item	Model	KSHAR5×5-D	KSHAR5×5-E	KSHAR6×8-F
Applicable actuator		RAT5	RAT10	RAT30
Maximum absorption	J [ft·lbf]	1.0 [0.74]	2.0 [1.48]	3.0 [2.21]
Absorbing stroke	mm [in.]	5 [0.20]		8 [0.31]
Maximum operating frequency	cycle/min	60		30
Maximum impact speed	mm/s [ft./sec.]	300 [0.98]		
Angle variation		8° or less		12° or less
Operating temperature range	°C [°F]	0~60 [32~140]		

Note: While staying within the range of shock absorption capacity, also keep the swing time adjustment range and allowable energy of Rotary Actuators RAT series.

- Remarks: 1. Do not loosen or remove the small screw on the rear end of the shock absorber. The oil contained inside could leak out, damaging shock absorber's functions.
2. Depending on operating conditions, the durability may vary from Rotary Actuators RAT series.

Order Codes

KSHAR

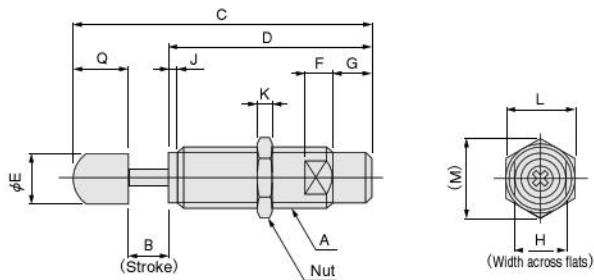


- 5×5-D : For RAT5-□
- 5×5-E : For RAT10-□
- 6×8-F : For RAT30-□

Shock absorber for rotary actuators RAT series

Remark: The shock absorber and rubber stopper also include one nut each for securing to the main body.

Dimensions (mm)



Model	A	B	C	D	E	F	G	H	J	K	L	M	Q
KSHAR5×5-D	M8×0.75	5	46	31	6	3	5	7	1.2	2	10	11.5	10
KSHAR5×5-E	M8×0.75	5	46	31	6	3	5	7	1.2	2	10	11.5	10
KSHAR6×8-F	M10×1	8	61	45	8	4	5	9	2	3	12	13.9	8

Caution: For Rotary Actuators RAT series, see the Actuators General Catalog.