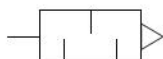


MUFFLERS Made of Plastic

M3 × 0.5 ~ R1/2

- Offer superior noise suppressing effect.
- Low resistance to air flow, thus avoiding adverse effects on equipment operations.
- Compact and lightweight, for easy mounting.
- Offer a long operating life. Elements do not corrode over time, and maintain superior moisture and oil resistance.
- Cleaning with petroleum, etc., is a simple operation.

Symbol



Specifications

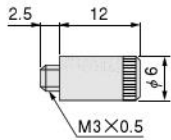
| Item | Model | KM-03 | KM-05 | KM-10 | KM-11 | KM-22 | KM-23 | KM-31 | KM-41 |
|-----------------------------|----------------------|---|--------------------|--|---|------------|---|-------------|---|
| Port size | | M3 × 0.5 | M5 × 0.8 | R1/8 | | R1/4 | | R3/8 | R1/2 |
| Media | | Air | | | | | | | |
| Operating pressure range | MPa [psi.] | 0 ~ 0.7 [0 ~ 102] | | | 0 ~ 0.9 [0 ~ 131] | | | | |
| Proof pressure | MPa [psi.] | 0.9 [131] | | | 1.1 [160] | | | | |
| Operating temperature range | °C [°F] | 5 ~ 60 [41 ~ 140] | | | | | | | |
| Materials | Body | Polyacetal (Duracon) | | | | | | | |
| | Element | Expanded polyethylene (filtration rating 10 μm) | | Polyvinyl alcohol resin (sponge, filtration rating 5 μm) | Sintered polyethylene (filtration rating 20 μm) | | Sintered polyethylene (filtration rating 40 μm) | | Sintered polyethylene (filtration rating 20 μm) |
| Effective area | mm ² [Cv] | 1.0 [0.06] | 4.0 [0.22] | 5.5 [0.31] | 15 [0.83] | 21 [1.17] | 43 [2.39] | 65 [3.61] | 74 [4.11] |
| Noise suppressing effect | dB | 15 ^{Note} | 13 ^{Note} | 7 | 18 | 18 | 18 | 27 | 34 |
| Mass | g [oz.] | 0.5 [0.018] | 1.0 [0.035] | 0.9 [0.032] | 4 [0.14] | 4.5 [0.16] | 18 [0.63] | 19.5 [0.69] | 22 [0.78] |
| Sales unit | | One pack (10 pcs.) | | | | | | | |

Note: Values at air pressure of 0.5MPa [73psi.] with installation in solenoid valve. (Solenoid valve used: **KM-03** for **040-4E1**, **KM-05** for **050-4E1**)

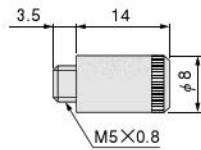
| Item | Model | KM-J6 | KM-J8 | KM-J10 | KM-J12 |
|-----------------------------|----------------------|----------------------|-------------|------------|-----------|
| Port size | | φ 6 | φ 8 | φ 10 | φ 12 |
| Media | | Air | | | |
| Operating pressure range | MPa [psi.] | 0 ~ 0.7 [0 ~ 102] | | | |
| Proof pressure | MPa [psi.] | 0.9 [131] | | | |
| Operating temperature range | °C [°F] | 5 ~ 60 [41 ~ 140] | | | |
| Materials | Body | Polyacetal (Duracon) | | | |
| | Element | Polyvinyl alcohol | | | |
| Effective area | mm ² [Cv] | 9.8 [0.54] | 21 [1.17] | 25 [1.39] | 42 [2.33] |
| Noise suppressing effect | dB | 23 | 33 | 35 | 28 |
| Mass | g [oz.] | 1.3 [0.046] | 3.9 [0.138] | 6.5 [0.23] | 9 [0.32] |
| Sales unit | | One pack (10 pcs.) | | | |

Dimensions (mm)

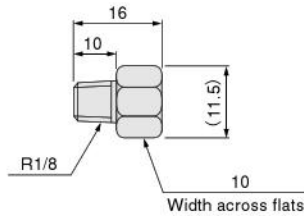
● KM-03



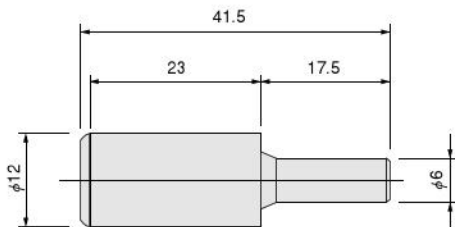
● KM-05



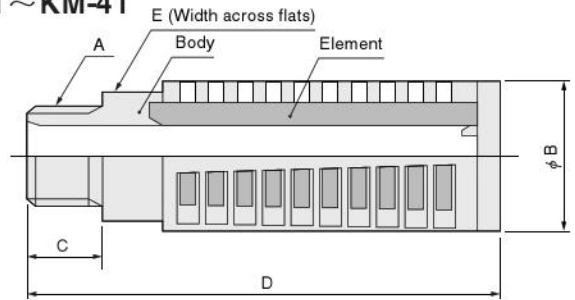
● KM-10



● KM-J6

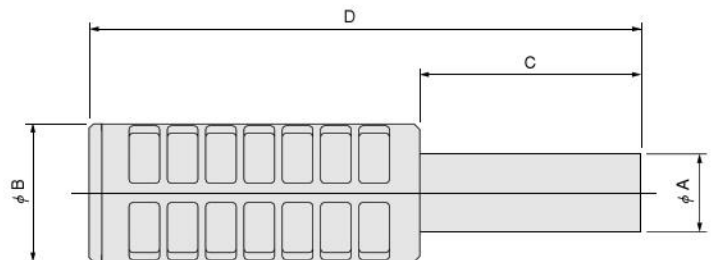


● KM-11 ~ KM-41



| Code Model | A (R) | B | C | D | E (width across flats) |
|---------------|----------|----|----|------|---------------------------|
| KM-11 | 1/8 | 16 | 7 | 33 | 14 |
| KM-22 | 1/4 | 16 | 10 | 36 | 14 |
| KM-23 | 1/4 | 20 | 10 | 62.5 | 17 |
| KM-31 | 3/8 | 26 | 12 | 68 | 24 |
| KM-41 | 1/2 | 28 | 15 | 71 | 24 |

● KM-J8 ~ KM-J12



| Code Model | A | B | C | D |
|---------------|----|----|----|----|
| KM-J8 | 8 | 15 | 26 | 64 |
| KM-J10 | 10 | 18 | 30 | 73 |
| KM-J12 | 12 | 20 | 35 | 83 |

Handling Instructions and Precautions

- As the body is made of plastic, do not subject it to excessive force.
- For cleaning, use a neutral detergent or cleaning oil. Do not use thinner, benzene, or other solvents.

● KM-03, KM-05

Use fingertips to tighten for mounting. Use of pliers or other tools could damage the unit.

● KM-10 ~ KM-41

Use fingertips to tighten until it stops. Then, use a tool to lightly tighten a little further.

● KM-J6 ~ KM-J12

Use by inserting into the quick fitting. After mounting, check that the muffler cannot be pulled out.