

CS2F, 3F, 4F, 5F

Reed Switch Type Sensor Switch

Applicable cylinders

● Slim cylinders ^{Note} ● DYNA cylinders ● GA ● Swing cylinders

Note: Excluding Slim block cylinder ϕ 16 [0.630in.]



Specifications

Item	Model	CS2F	CS3F	CS4F	CS5F
Wiring type		2-lead wire			
Load voltage		AC85~230V (r.m.s)	DC5~30V	DC5~30V	DC3~30V
Load current		2~200mA	10~46mA ^{Note 1}	5~25mA ^{Note 1}	0.1~80mA
Internal voltage drop		0.1V MAX. (At 200mA load current)	3V MAX. (At 46mA load current) ^{Note 2}	2.8V MAX. (At 25mA load current) ^{Note 2}	0.1V MAX. (At 80mA load current)
Leakage current		1mA MAX. (AC100V) 2mA MAX. (AC200V)	0mA		
Response time		2ms MAX.	1.2ms MAX.		
Insulation resistance		100M Ω MIN. (At DC500V Megger, between case and lead wire end)			
Dielectric strength		AC500V (50/60Hz) in 1 minute (Between case and lead wire end)			
Shock resistance ^{Note 3}		294.2m/s ² [30G] (Non-repeated shock)			
Vibration resistance ^{Note 3}		88.3m/s ² [9G] (Total amplitude 1.5mm [0.06in.], 10~55Hz), Resonance frequency 5000 \pm 400Hz			
Environmental protection		-			
Operation indicator		When ON: Red neon lamp turns off	When ON: Red LED indicator lights up		-
Method of wiring		With DIN connector (Cable outer diameter ϕ 6.5 [0.256in.] MAX., Wire ϕ 1.25SQ MAX.)			
Ambient temperature		0~60°C [32~140°F]			
Storage temperature range		-10~70°C [14~158°F]			
Contact protection		Not required	Required (See contact protection on p.1566.)		
Mass		40g [1.41oz.]			

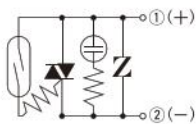
Notes: 1. Ta=37°C [98.6°F]

2. The internal voltage drop depends on load current.

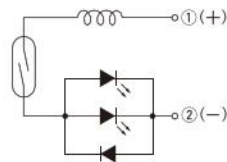
3. Measured by Koganei test standard.

Internal Circuit

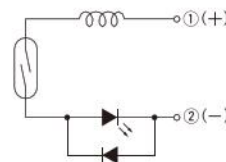
CS2F



CS3F



CS4F



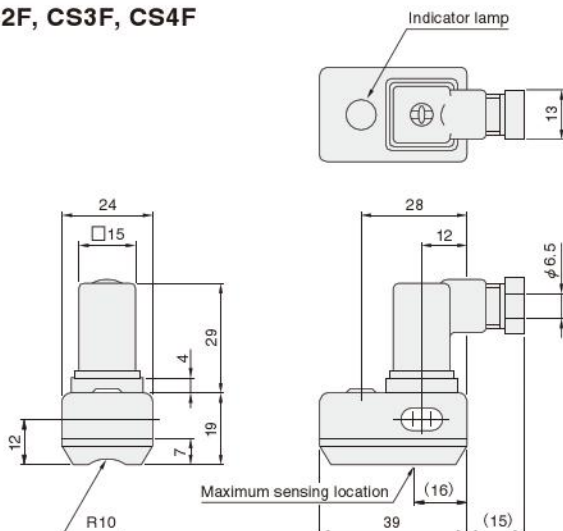
CS5F



The numbers in circle show the terminal numbers of the F type connector.

Dimensions (mm)

CS2F, CS3F, CS4F



CS5F

